

SAGE REAL ESTATE LTD., BROKERAGE

One
Group.

TORONTO REAL ESTATE

225SackvilleSt-1010.com



The Corner Suite You've Been Waiting For!

Welcome to Paintbox Condos, a LEED gold award winning Daniels building! This spacious corner suite features breathtaking views from all windows. It's a split two bedroom plan with 9 foot ceilings, two full baths, well sized closets & a huge private balcony overlooking the park. Convenience at your doorstep includes Grocery Store, Shoppers, Coffee shops (one at the bottom of the building), Banks, Restaurants & more.

NEIGHBOURHOOD

Paintbox is part of the award-winning Regent Park revitalization but also an easy walk to adjoining neighbourhoods like Cabbagetown, Distillery District, Corktown and Riverside/ Leslieville. 99/100 bike score; 84/100 walk score; 88/100 transit score. 1 minute to TTC and 2 minutes to the DVP.

PARTICULARS

Possession Flexible

Size 700-799 square feet

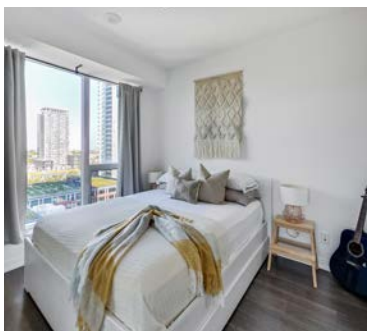
Property Taxes \$2,308.47

Maintenance Fees \$600.18 monthly

Locker One locker

Parking One parking

Includes All stainless steel appliances: fridge, stove, dishwasher & microwave. Washer/dryer. TV mount.



**One
Group.**

TORONTO REAL ESTATE

MICHELLE KAWEESA
Sales Representative
416.877.8444
michelle@OneGroupRE.com
📱 @onegrouptoronto

NASMA ALI
Sales Representative
416.483.8000
nasma@OneGroupRE.com
📱 @nasmadotali

SAGE

Sage Real Estate Ltd., Brokerage
2010 Yonge Street, 416.483.8000

Information and statements contained herein are from sources deemed to be reliable and assumed to be correct but no warranty or representations are made as to the accuracy thereof and same is subject to errors and/or omissions. Not intended to solicit sellers or buyers currently under contract with another brokerage. Designed and printed by Sage Real Estate Ltd., Brokerage | SageRealEstate.ca