

SAGE REAL ESTATE LTD., BROKERAGE

One
Group.

TORONTO REAL ESTATE

504MainStreet.com



504MainStreet.com

The starter home you've been waiting for! Beautiful brick semi with private porch & 2 car parking! Spacious open-concept main floor with high ceilings. Upgraded kitchen includes breakfast bar with custom built-in cabinetry. Master bedroom with wall-to-wall closet and walk-out to large deck. Ample yard with perennials & new storage shed. Nestled on the quiet stretch of Main St sitting on the edge of Taylor Creek.

NEIGHBOURHOOD

Woodbine - Lumsden Steps to every amenity you need; shops, cafés, parks, schools and subway/TTC.

TYPE

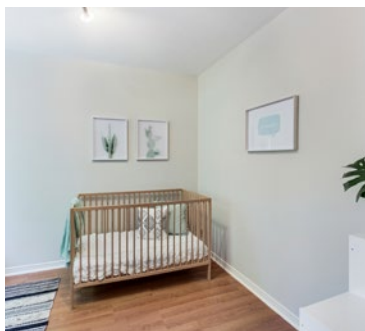
2 Storey Semi-Detached 2 bedrooms & 2 bathrooms.

PARTICULARS

Taxes \$2,900 / 2019

Parking 2 parking spaces

Inclusions Stainless steel kitchen appliances: GE glasstop Stove with hood, GE side-by-side fridge with ice & water dispenser, GE dishwasher, microwave. Inglis washer & dryer. All light fixtures and window coverings. Gas burner & equipment. AC (2016). Hot water tank (rental).



**One
Group.**

TORONTO REAL ESTATE

NASMA ALI
Sales Representative
416.834.5222
nasma@OneGroupRE.com
OneGroupRE.com

SAGE

Sage Real Estate Ltd., Brokerage
2010 Yonge Street, 416.483.8000

Information and statements contained herein are from sources deemed to be reliable and assumed to be correct but no warranty or representations are made as to the accuracy thereof and same is subject to errors and/or omissions. This feature sheet is not intended to solicit sellers or buyers currently under contract with another brokerage. Feature sheet designed and printed by Sage Real Estate Ltd., Brokerage | SageRealEstate.ca